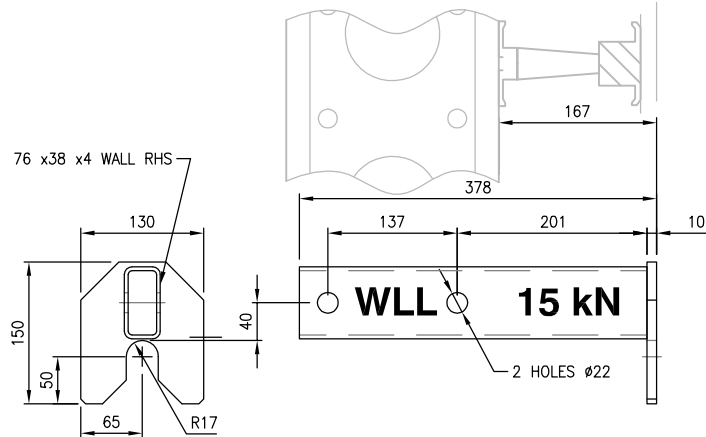


SINGLE AND MULTIPLE JUMP FORM SYSTEMS

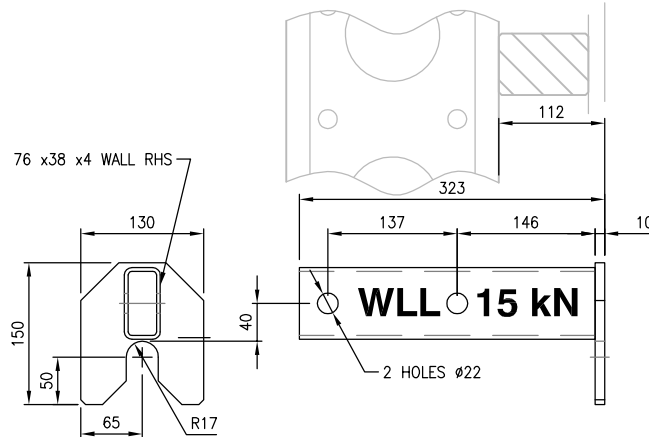
NOTE: The following systems utilise items from: TD008 Superslim Soldier, TD010 Tie Systems & TD007 Aluminium Beams.

**S/S SHEAR
BRACKET**

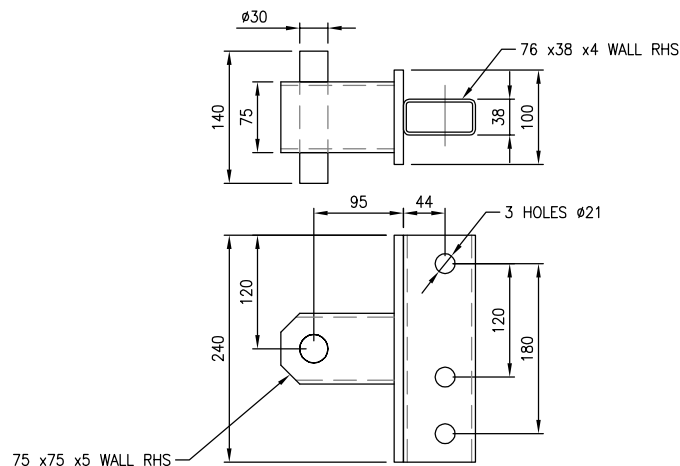
Code: SSA10003 3.0kg

**S/S LVL SHEAR
BRACKET**

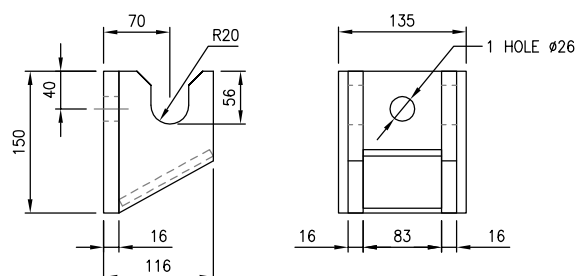
Code: SSA10177 2.7kg

**S/S FORM SUPPORT
BRACKET**

Code: SSA10165 5.8kg

**S/S WALL SHEAR
BRACKET**

Code: SSA10175 5.9kg

NOTE:
BRACKET REQUIRES USE OF M24 BOLT
BNA12455 (55mm LONG) TO SECURE
M24 ANCHOR SCREWS

This information conforms to AS3610

RMD reserves the right to change this information.

DATE: 18 Nov 2013

ISSUE No: 6

PREPARED BY: D.H.

APPROVED:

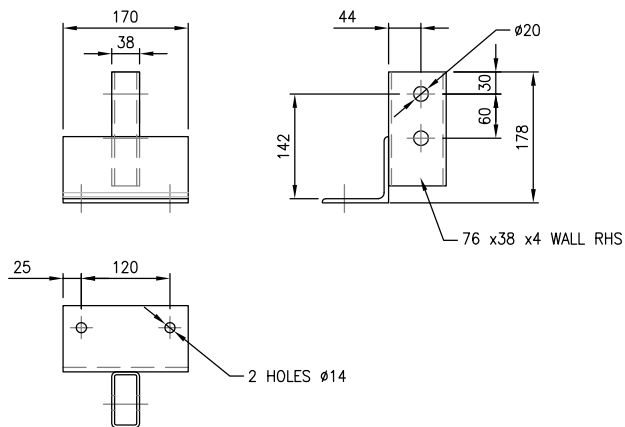
Handwritten signature

TECHNICAL DATA

SINGLE AND MULTIPLE JUMP FORM SYSTEMS

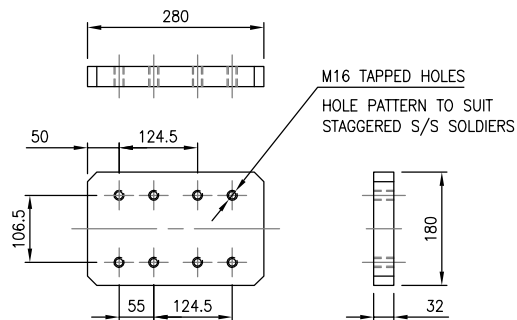
WALKWAY SUPPORT BRACKET

Code: SSA10180 2.4kg



S/S OFFSET PLATE

Code: SSA10172 9.33kg



FASTENERS

M24 x 55mm Hex Hd
Bolt G8.8
Code: BNA12455 0.30kg

— TO SECURE SSA10175 TO M24 ANCHOR SCREW

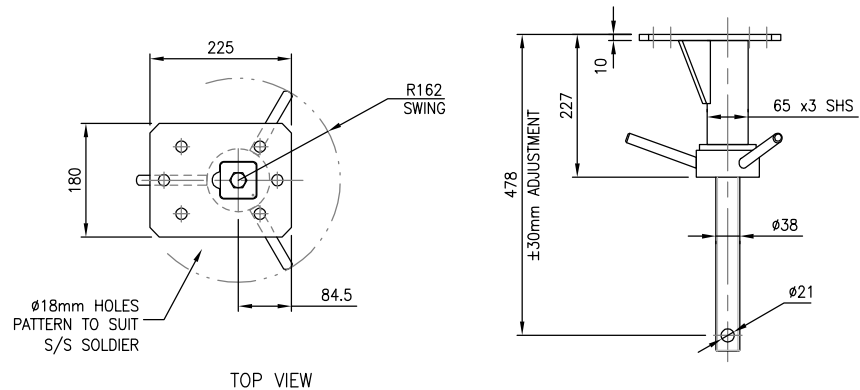
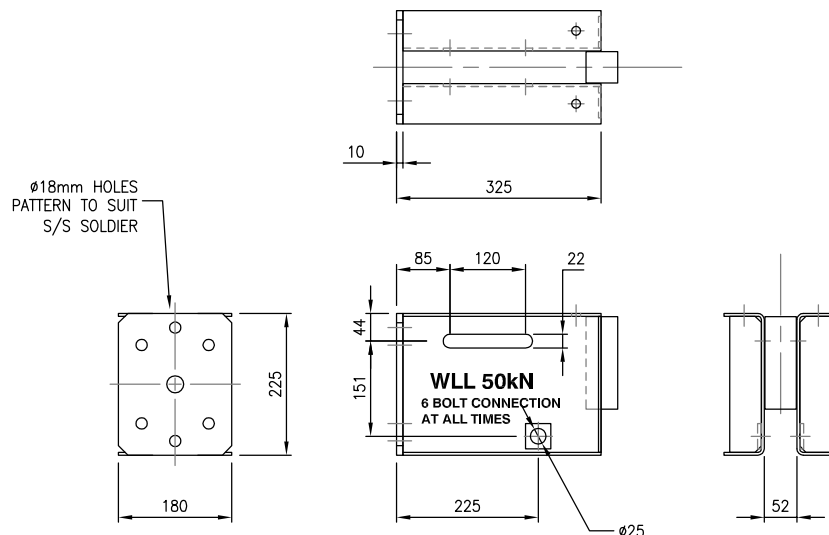
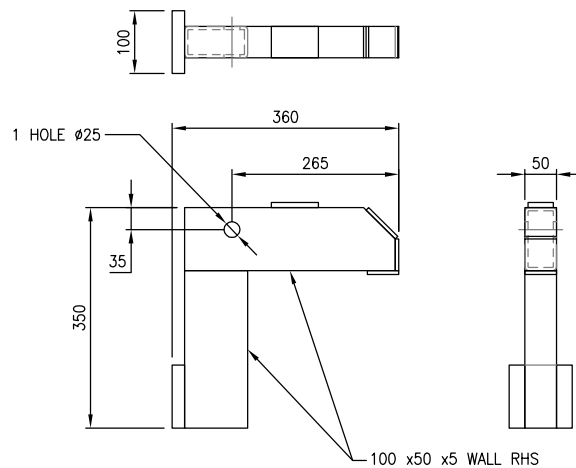
NOTE:
OTHER FASTENERS REQUIRED ARE LISTED
IN ASSOCIATED TECHNICAL DATA SHEETS
— TD007 / TD008

TECHNICAL DATA

SINGLE AND MULTIPLE JUMP FORM SYSTEMS - INTERNAL 50kN SYSTEM

**S/S INTERNAL
SHUTTER JACK**

Code: SSA10027 11.0kg

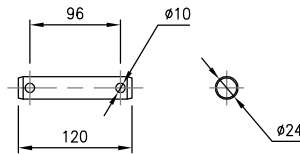
**S/S SHEAR KEY
END - 50kN**Code: SSA10032 14.5kg
PAINTED BLUE**S/S SHEAR KEY
ARM - 50kN**Code: SSA10042 10.1kg
PAINTED BLUE

TECHNICAL DATA

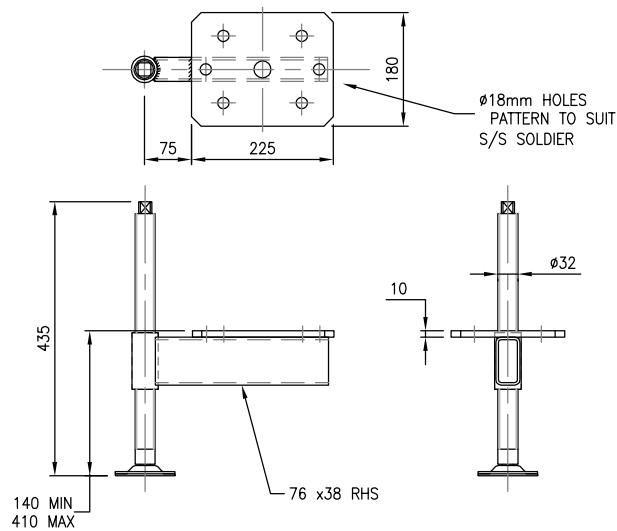
SINGLE AND MULTIPLE JUMP FORM SYSTEMS - INTERNAL 50kN SYSTEM

**S/S SHEAR
PIVOT PIN - 50 kN**

Code: SSA10034 0.46kg

**S/S INTERNAL
SUPPORT JACK**

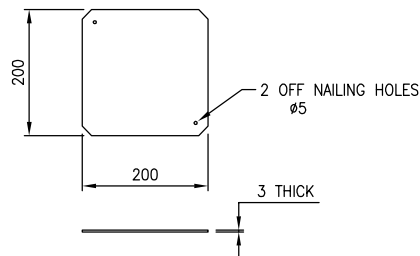
Code: SSA20007 7.5kg



NOTE:
UNIT MUST BE CONNECTED TO SOLDIERS
USING 4 OFF M16 G8.8 BOLTS

**S/S INTERNAL
SUPPORT JACK
SLIP PLATE**

Code: SSA20008 0.90kg

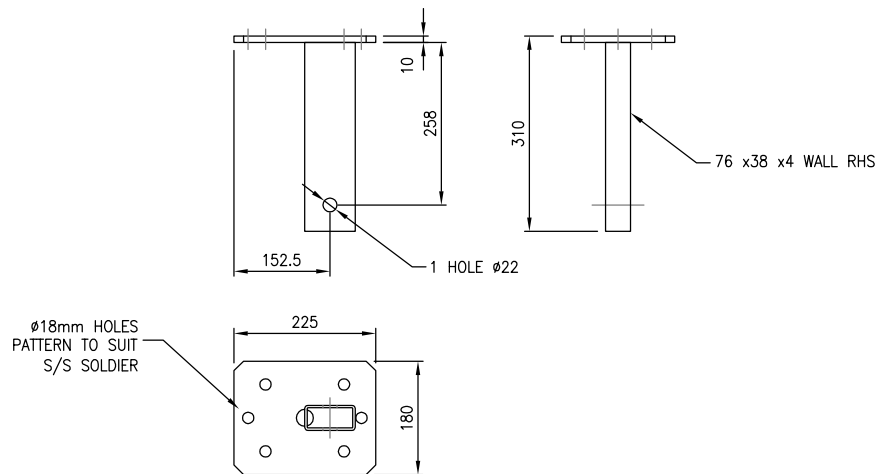
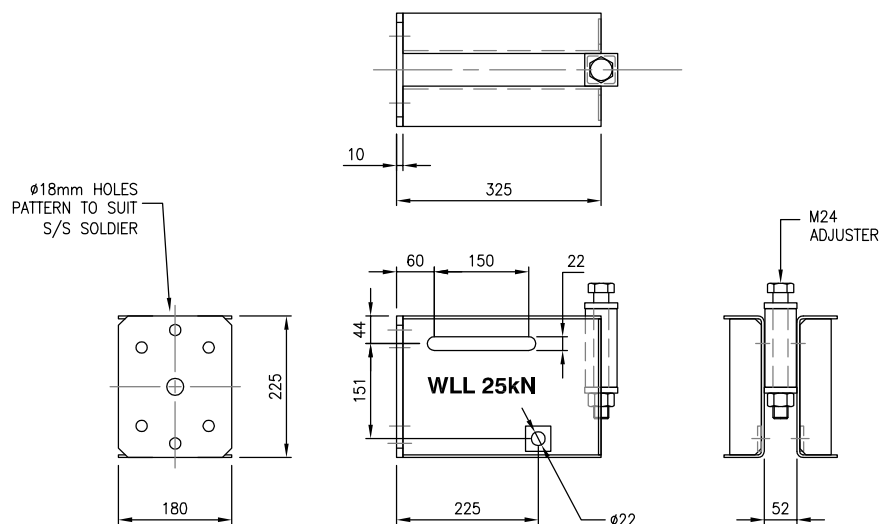
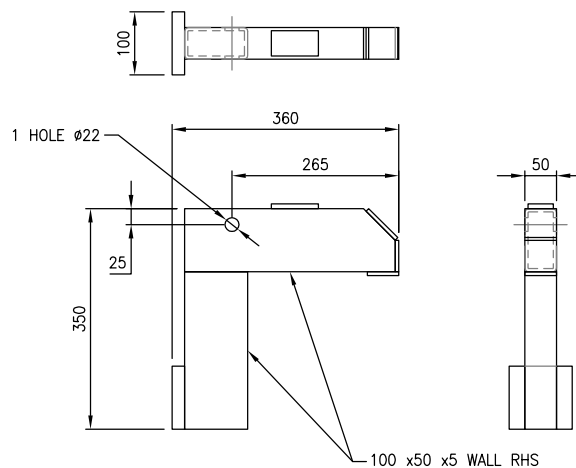


TECHNICAL DATA

SINGLE AND MULTIPLE JUMP FORM SYSTEMS - INTERNAL 25kN SYSTEM

**S/S SHEAR KEY
FORM BRACKET MK 1**

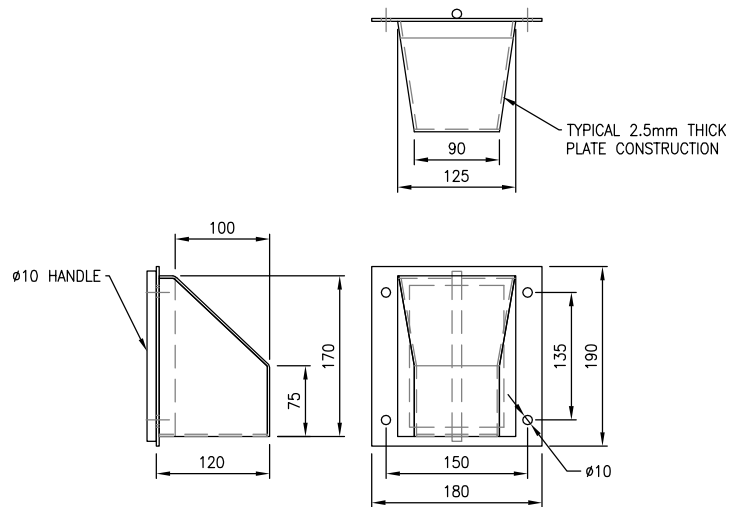
Code: SSA10160 5.2kg

**S/S SHEAR KEY
END - 25kN**Code: SSA10030 13.5kg
PAINTED ORANGE**S/S SHEAR KEY
ARM - 25kN**Code: SSA10040 8.1kg
PAINTED ORANGE

SINGLE AND MULTIPLE JUMP FORM SYSTEMS - 25kN/50kN INTERNAL SYSTEM

**S/S SHEAR KEY
POCKET FORM**

Code: SSA10045 4.0kg

NOTE:
FOR USE WITH 150mm WALES ONLY**FASTENERS**

M20 x 130mm Hex Hd

Bolt G8.8

Code: BNA12080 0.36kg

M20 Nyloc Nut – Type "P"

Code: BNA12002 0.06kg

M20 FLAT WASHER

Code: BNA22000 0.02kg

S/S COTTER PIN 63 x8mm

Code: SSA10055 0.05kg

NOTE:
OTHER FASTENERS REQUIRED ARE LISTED
IN ASSOCIATED TECHNICAL DATA SHEETS
– TD007 / TD008

– TO CONNECT SSA10040 to SSA10030 (25kN SYSTEM)

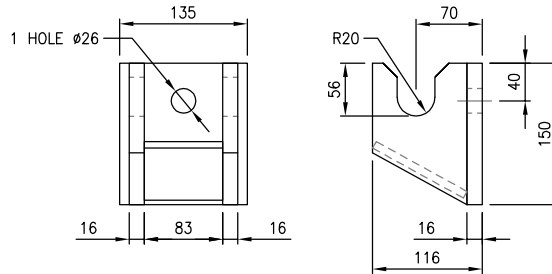
TECHNICAL DATA

ROLLBACK SYSTEM

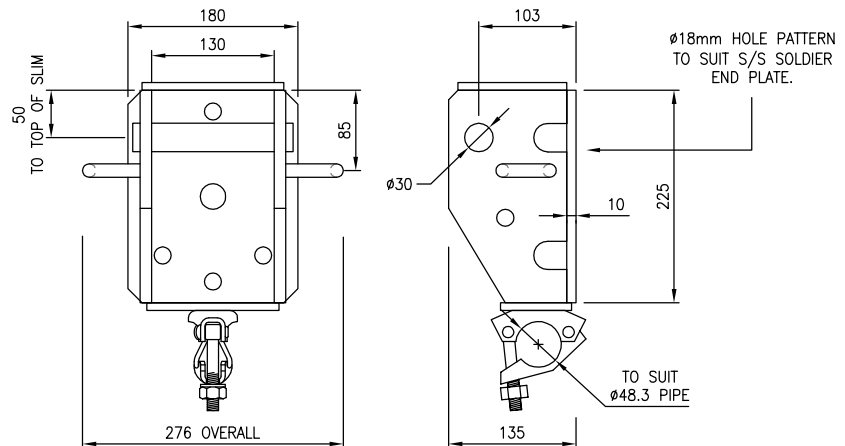
NOTE: The Rollback System utilises items from: TD008 Superslim Soldier, TD010 Tie Systems & TD007 Aluminium Beams.

S/S WALL SHEAR BRACKET

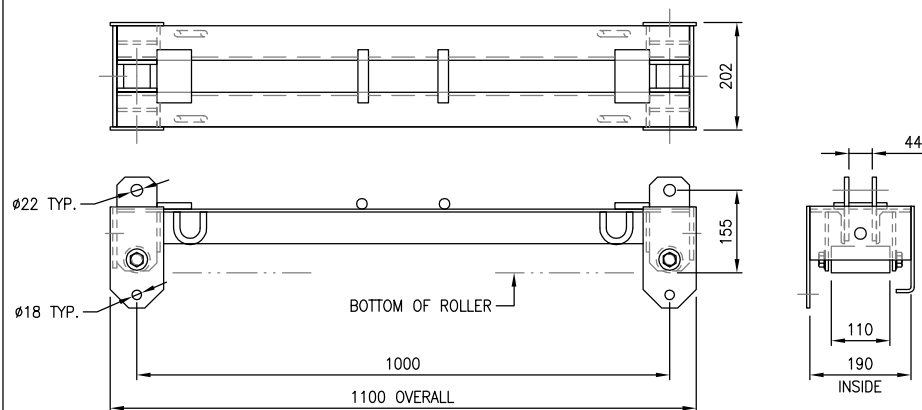
Code: SSA10175 5.9kg

NOTE:
BRACKET REQUIRES USE OF M24 BOLT
BNA12455 (55mm LONG) TO SECURE
M24 ANCHOR SCREWS**S/S FORM SHEAR BRACKET**

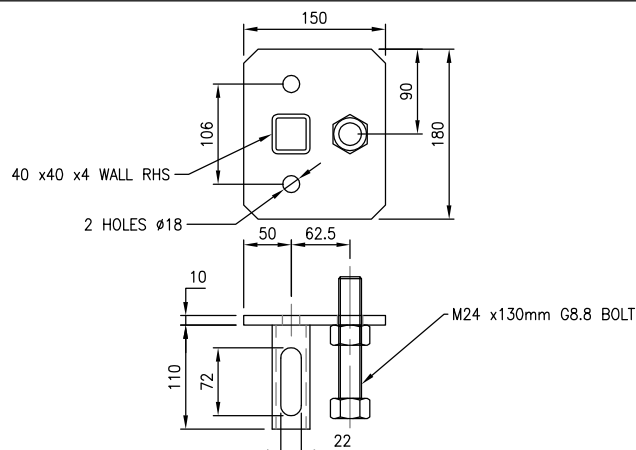
Code: SSA10185 11.5kg

**S/S ROLLER BASE**

Code: SSA10140 28.0kg

**S/S ROLLER FORM BRACKET**

Code: SSA10195 3.0kg

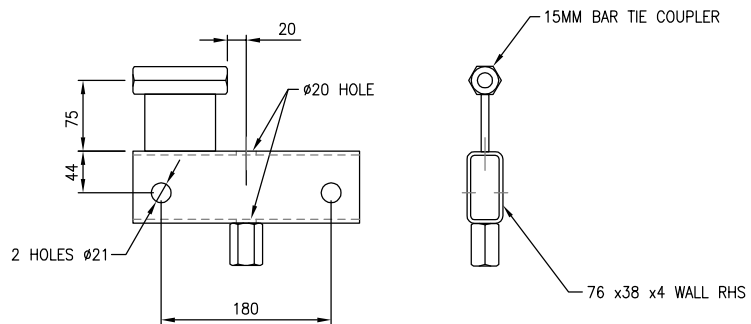


TECHNICAL DATA

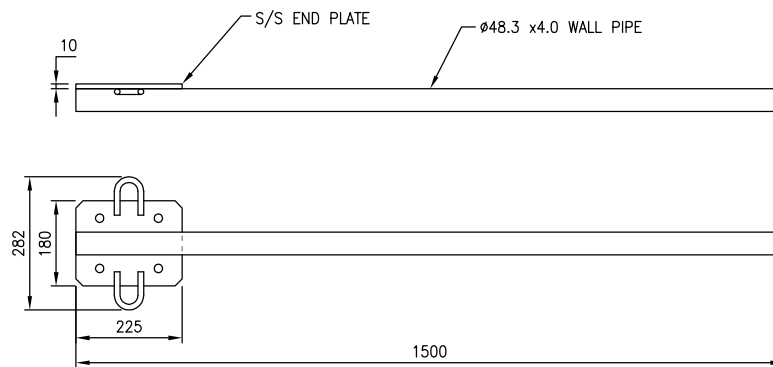
ROLLBACK SYSTEM

S/S ROLLER LOCK BRACKET

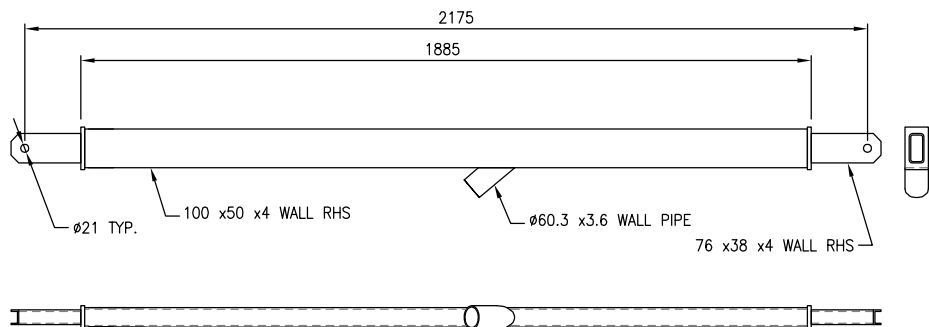
Code: SSA10190 2.0kg

**S/S ROLLER HANDRAIL**

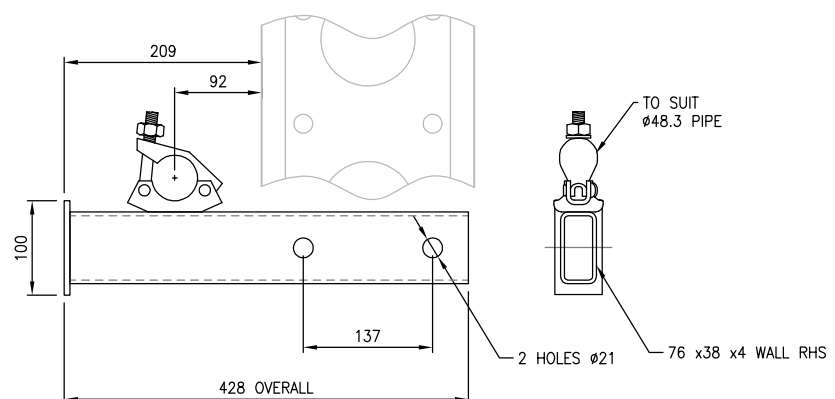
Code: SSA10010 9.9kg

**S/S ROLLBACK STRUT**

Code: SSA10035 19.4kg

**S/S FOOT PAD**

Code: SSA10065 3.5kg

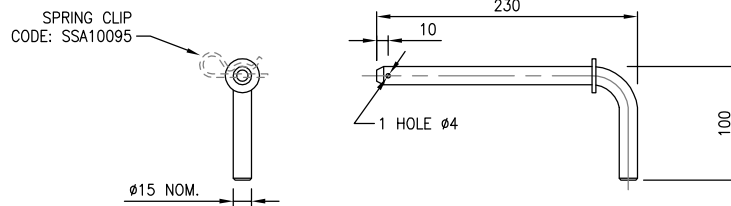


TECHNICAL DATA

ROLLBACK SYSTEM

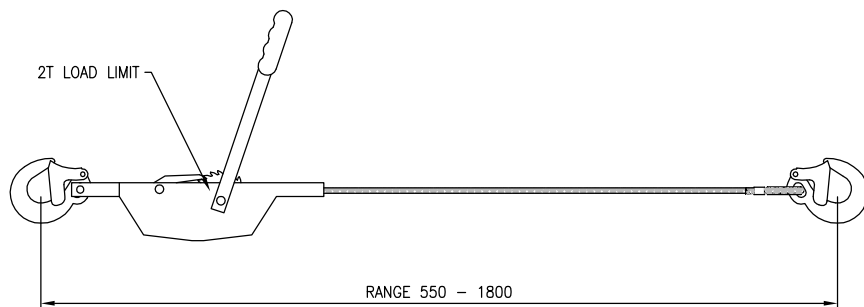
REFLEX PLATFORM PIN

Code: RXX30005 0.43kg



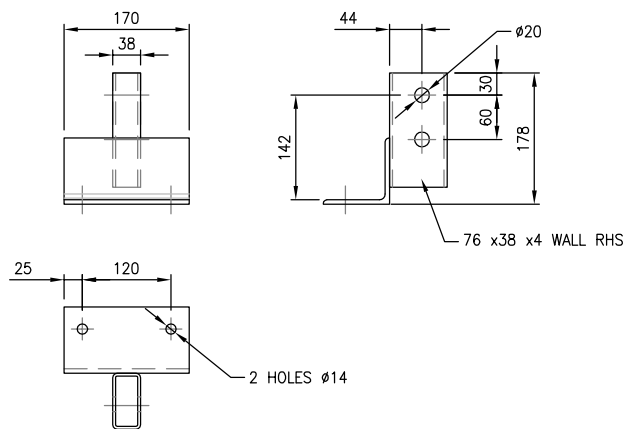
S/S FORM RETRACTOR

Code: SSA10070 4.0kg



WALKWAY SUPPORT BRACKET

Code: SSA10180 2.4kg



FASTENERS

M24 x50 Hex Hd G8.8 Bolt
Code: BNA12450 0.27kg

— TO SECURE SSA10185 TO M24 ANCHOR SCREW

NOTE:
OTHER FASTENERS REQUIRED ARE LISTED
IN ASSOCIATED TECHNICAL DATA SHEETS
— TD007 / TD008

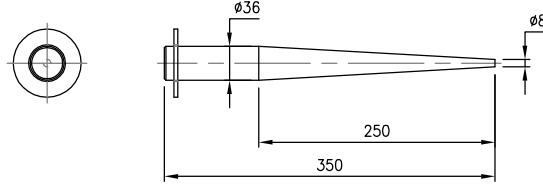
TECHNICAL DATA

CORNER SYSTEMS

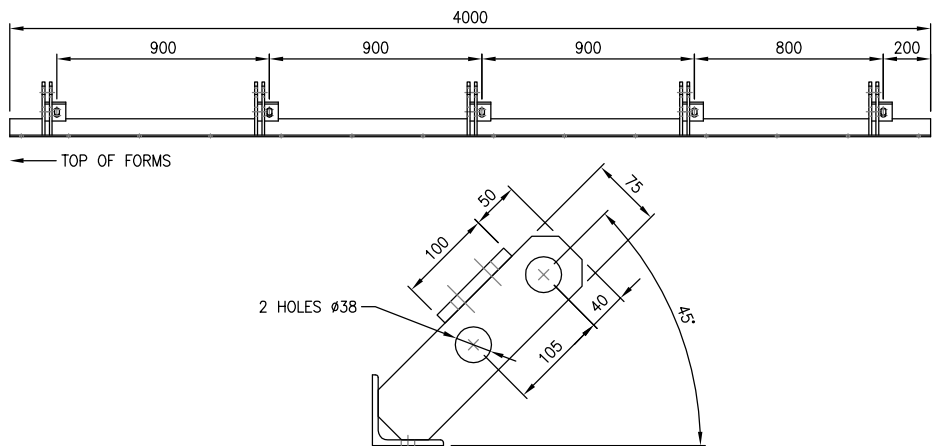
NOTE: The following systems utilise items from: TD010 Tie Systems & TD007 Aluminium Beams.

**S/S INTERNAL
CORNER PIN**

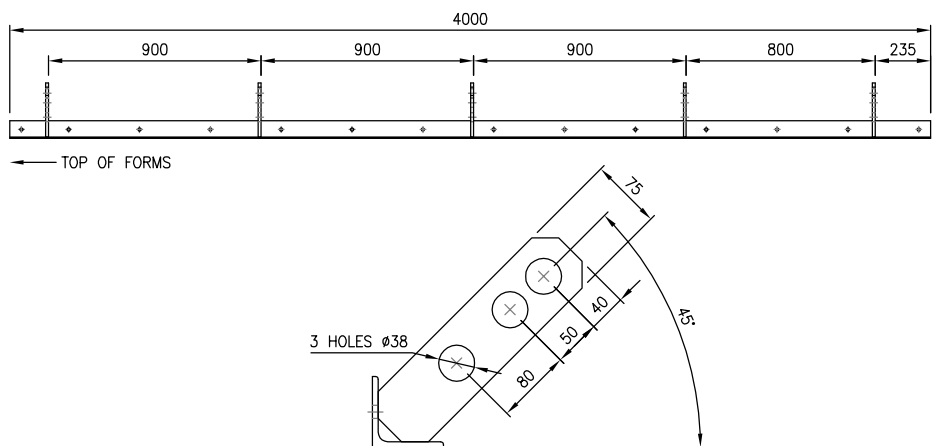
Code: SSA10060 1.85kg

**S/S INTERNAL
ANGLE 'A'**

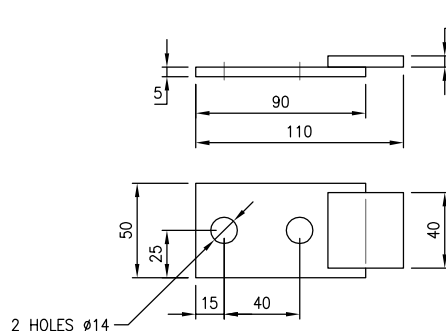
Code: SSA10260 50.3kg

**S/S INTERNAL
ANGLE 'B'**

Code: SSA10270 30.1kg

**S/S CORNER CLAMP**

Code: SSA10325 0.4kg



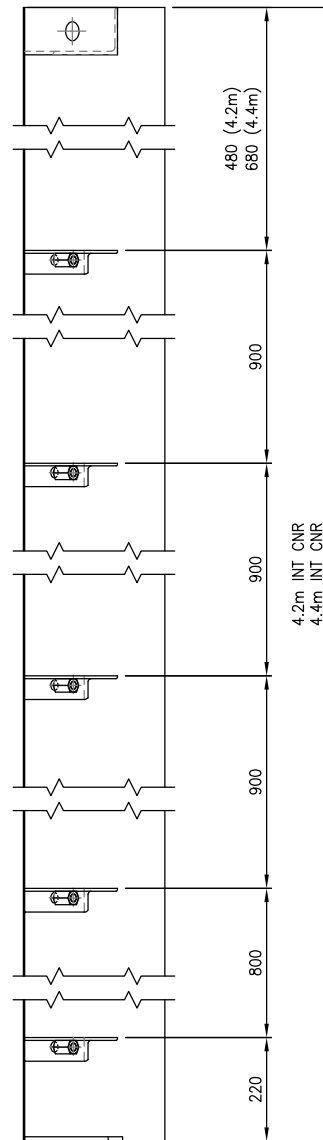
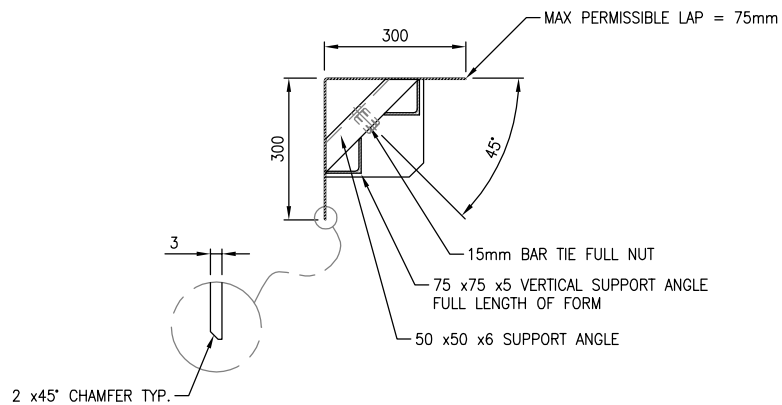
TECHNICAL DATA

CORNER SYSTEMS

S/S HEAVY DUTY INTERNAL CORNER

S/S HD Int Cnr 4.2m
Code: SSA10280 117.5kg

S/S HD Int Cnr 4.4m
Code: SSA10285 120.3kg

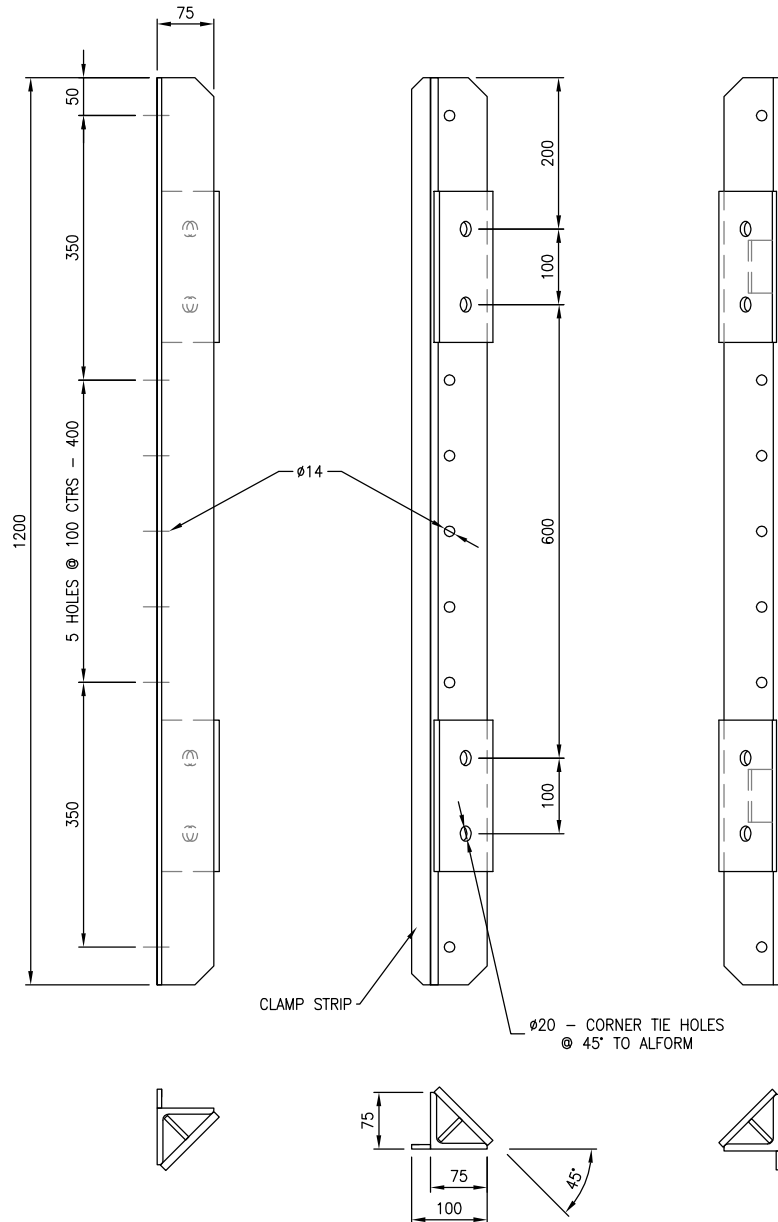


TECHNICAL DATA

CORNER SYSTEMS

S/S EXTERNAL
CORNER

Code: SSA10290 16.8kg



TECHNICAL DATA

This information conforms to AS3610

RMD reserves the right to change this information.

DATE: 18 Nov 2013

ISSUE No: 6

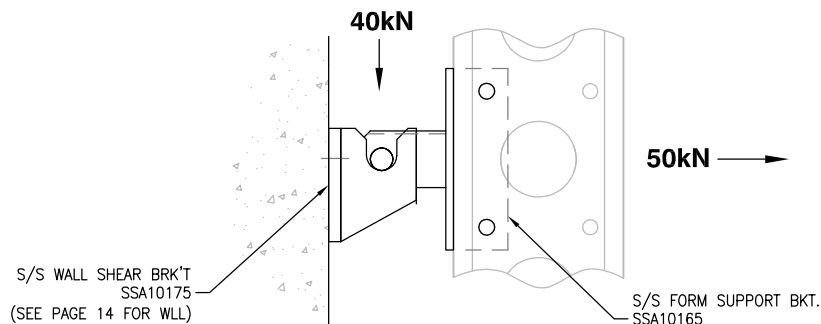
PREPARED BY: D.H.

APPROVED:

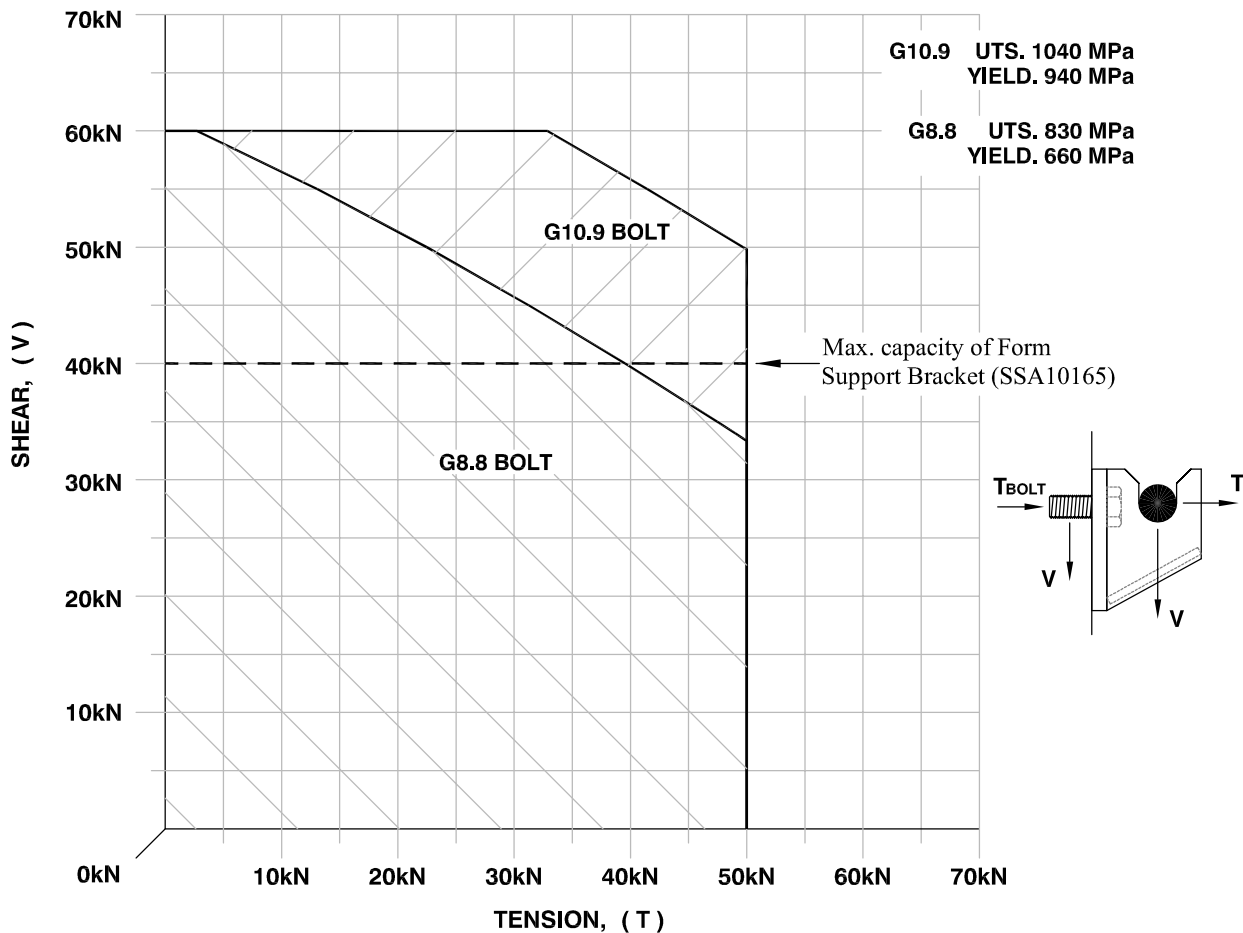
[Signature]

CLIMBING FORMWORK

- S/S Shear Bracket (SSA10003)
Maximum Working Load Limit. = 15kN
- S/S LVL Shear Bracket (SSA10177)
Maximum Working Load Limit. = 15kN
- S/S Shear Key End - 25kN (SSA10030)
Maximum Working Load Limit. = 25kN
- S/S Shear Key Arm - 25kN (SSA10040)
Maximum Working Load Limit. = 25kN
- S/S Shear Key End - 50kN (SSA10032)
Maximum Working Load Limit. = 50kN
- S/S Shear Key Arm - 50kN (SSA10042)
Maximum Working Load Limit. = 50kN
- Walkway Base (SSA10145), cantilevered out from Superslim Soldier.
Maximum Working Load Limit. = 6.2kN UDL (LSCF=2.0)
- Walkway Base (SSA10145), supported by a Turnbuckle from a Superslim Soldier.
Maximum Working Load Limit. = 20kN UDL (LSCF=2.0)
- Plumbing Jack (SSA20001)
Maximum Working Load Limit. = 37kN (LSCF=1.5)
- Bar Tie Connector (SSA10305)
Maximum Working Load Limit. = 66kN
- S/S Connecting Pin (SSX10044)
Maximum WLL in Shear. = 70kN
- S/S Form Support Bracket (SSA10165)
Maximum WLL Vertically down. = 40kN
Maximum WLL in Tension. = 50kN

**FORM SUPPORT BRACKET**

SUPERSLIM WALL SHEAR BRACKET CAPACITY (SSA10175)



The above graph shows the maximum working load limits for the Wall Shear Bracket when subjected to a combination of vertical & horizontal forces.

This graph applies for the Wall Shear Bracket (SSA10175) used with either Form Shear Bracket (SSA10185) or the Form Support Bracket (SSA10165)

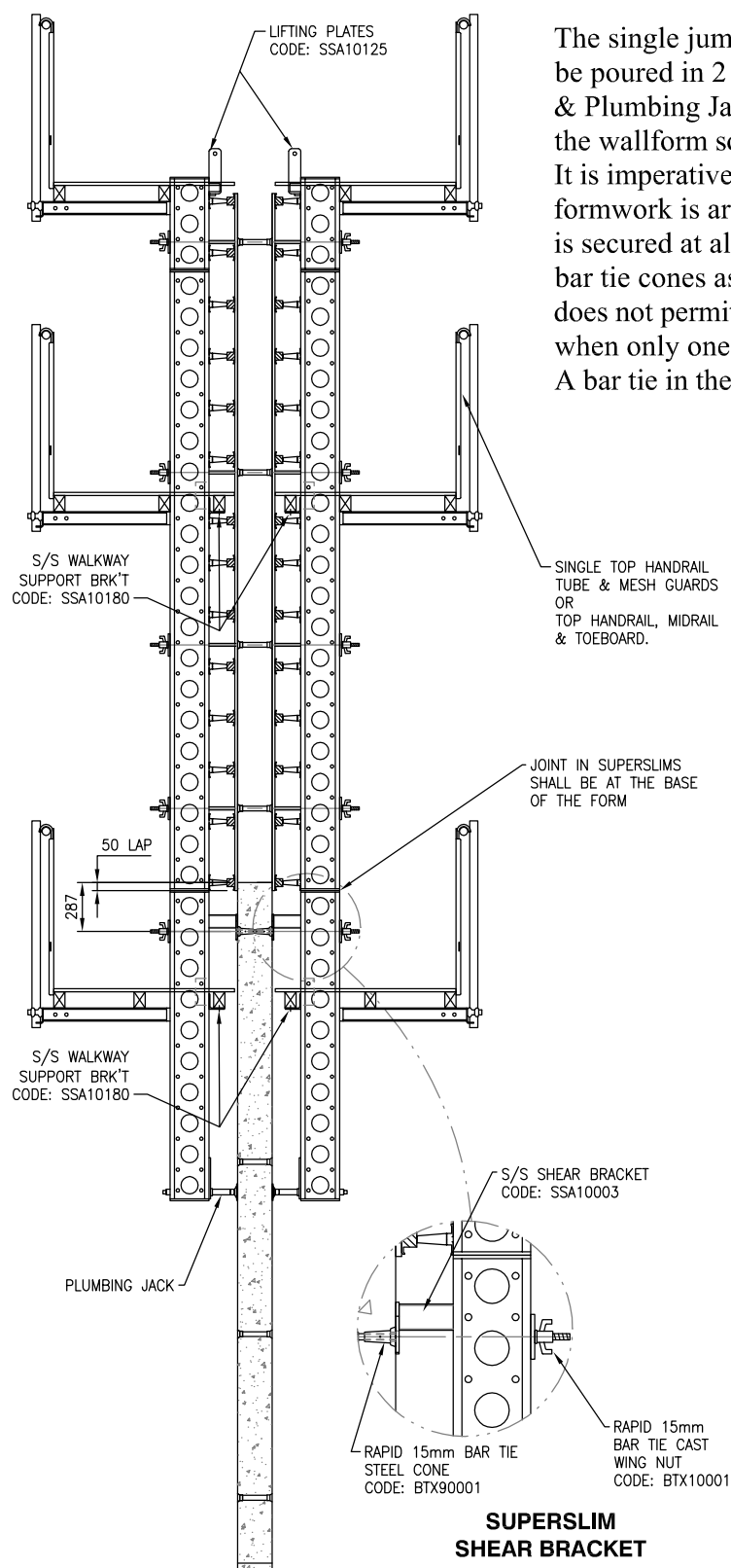
The actual maximum working load on the bolt:

$$\begin{aligned} \text{In Tension, } T_{\text{BOLT}} &= T + 0.64V \\ \text{In Vertical Shear} &= V \end{aligned}$$

These are the loads that shall be noted on the drawings

Capacity of the M24 anchor screw shall be checked if these are to be used.

SINGLE JUMP ARRANGEMENT



The single jump arrangement is for walls that are to be poured in 2 lifts only. After the 1st pour a Soldier & Plumbing Jack are to be bolted on to the bottom of the wallform soldiers.

It is imperative that the tie supporting the 2nd pour formwork is arranged so that the climbing formwork is secured at all times. This may be effected by using bar tie cones as shown, or some other system which does not permit the bar to be pulled through the wall when only one form is secured.

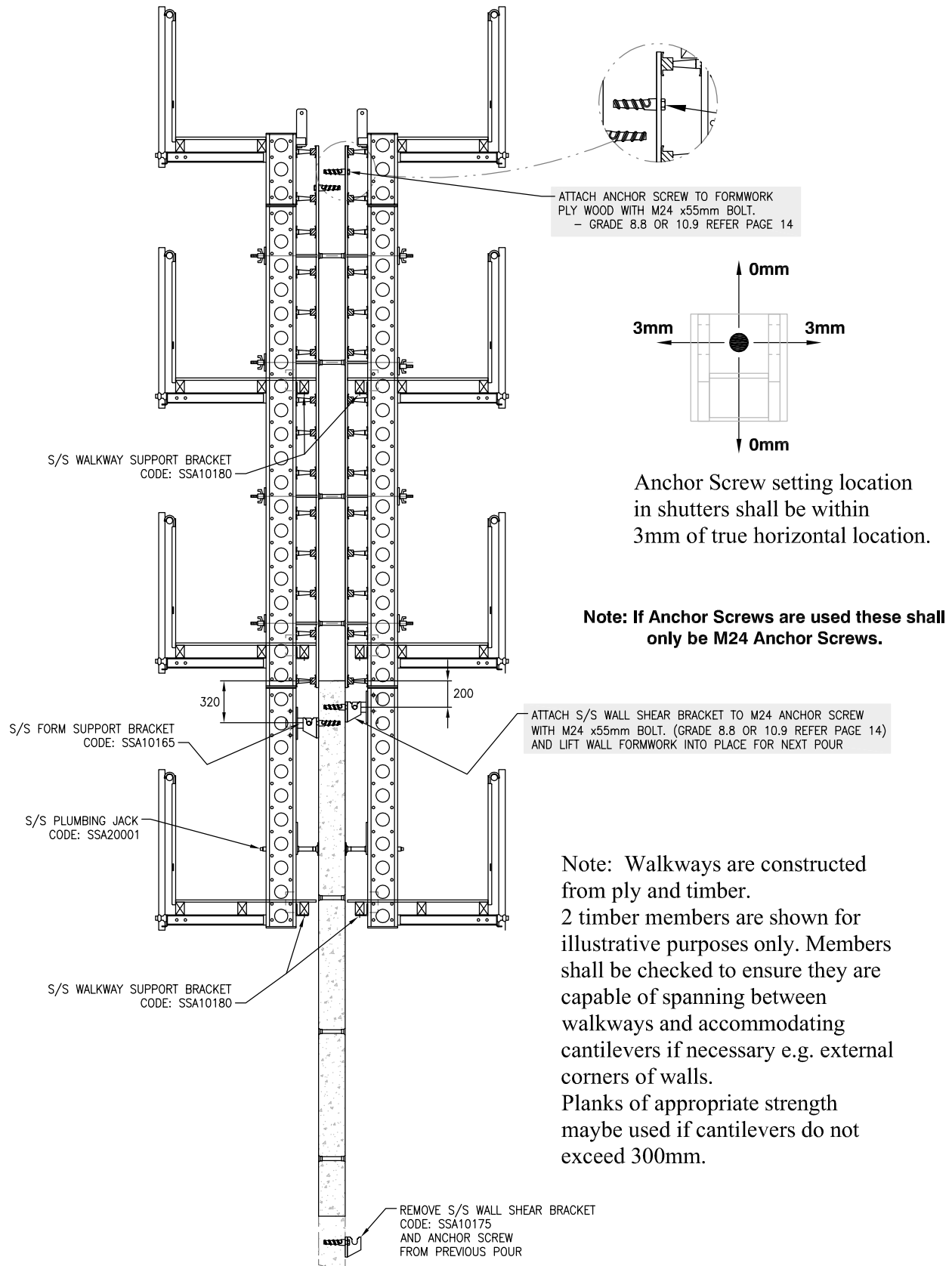
A bar tie in the conduit shall not be used.

Note: Walkways are constructed from ply and timber.

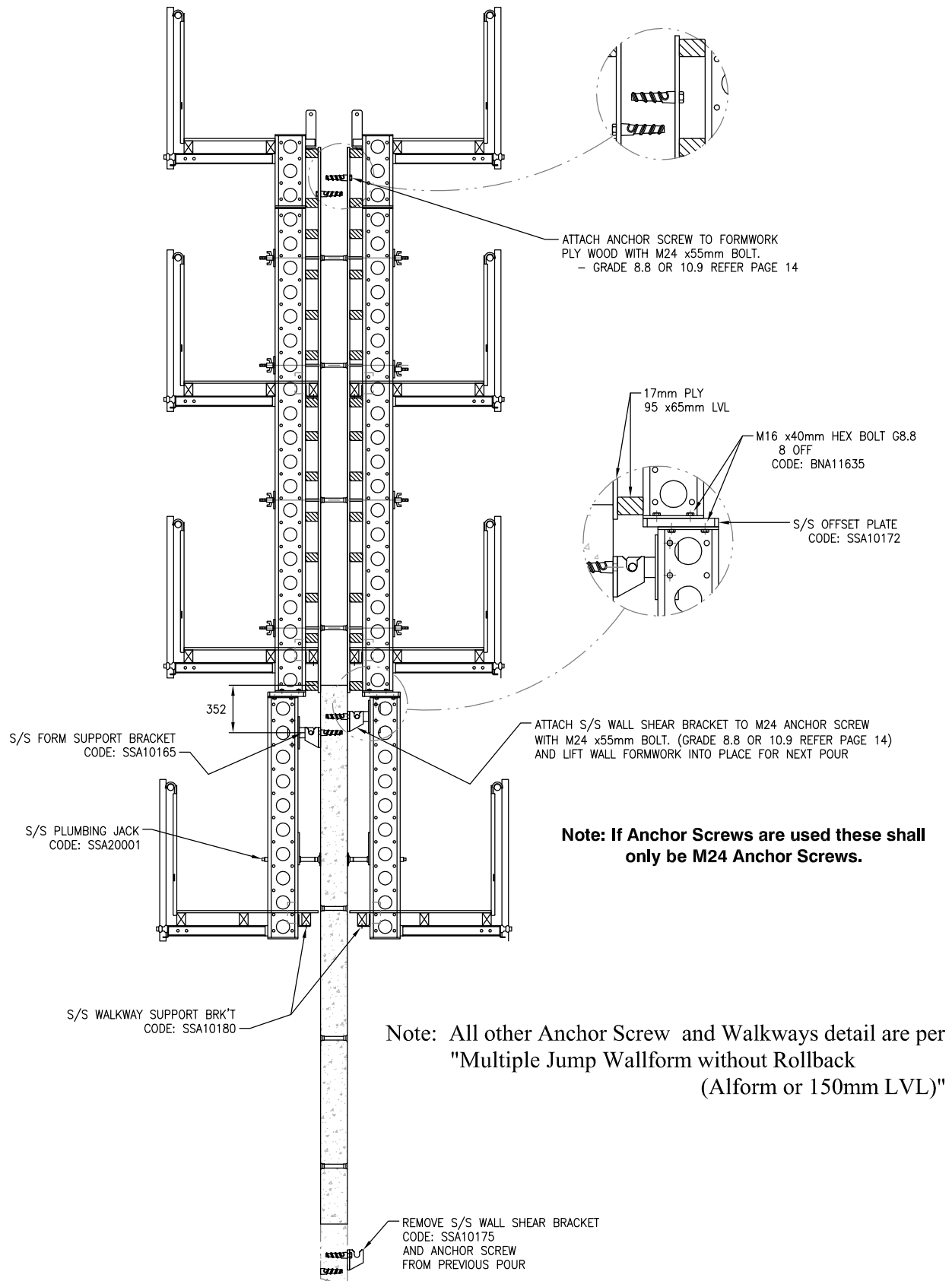
2 timber members are shown for illustrative purposes only. Members shall be checked to ensure they are capable of spanning between walkways and accommodating cantilevers if necessary e.g. external corners of walls.

Planks of appropriate strength maybe used if cantilevers do not exceed 300mm.

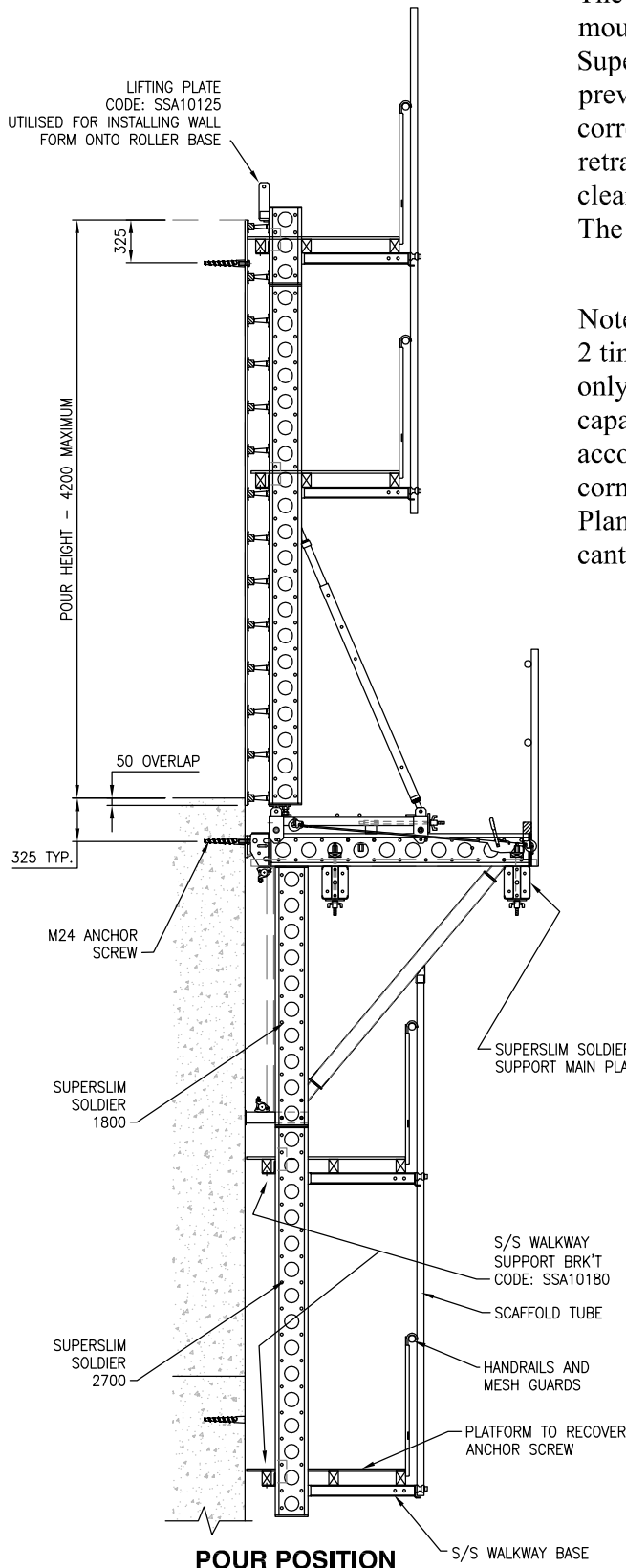
MULTIPLE JUMP WALLFORM WITHOUT ROLLOVER (ALFORM OR 150mm LVL)



MULTIPLE JUMP WALLFORM WITHOUT ROLLBACK (95 mm LVL)



DETAILS OF ROLLBACK SYSTEM



The Rollback system comprises shutters which are mounted on roller bases incorporated into a Superslim frame. The frames are secured to the previous pour by a Wall Shear Bracket & corresponding Form Shear Bracket. The forms are retracted by two Form Retractors to allow access for cleaning & oiling the forms.

The full assembly is crane lifted to the next position.

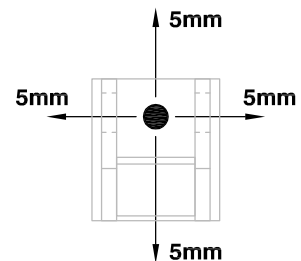
Note: Walkways are constructed from ply and timber. 2 timber members are shown for illustrative purposes only. Members shall be checked to ensure they are capable of spanning between walkways and accommodating cantilevers if necessary e.g. external corners of walls.

Planks of appropriate strength maybe used if cantilevers do not exceed 300mm.

FORMS AND EQUIPMENT REUSED FROM 1ST POUR ARRANGEMENT.

ROLLBACK EQUIPMENT INTRODUCED FOR 2ND POUR AND SUBSEQUENT POURS. SEE NEXT PAGE.

TRAILING PLATFORM FOR RECOVERY OF ANCHOR SCREWS AND WALL SHEAR BRACKETS. INTRODUCED FOR 3RD POUR AND SUBSEQUENT POURS.

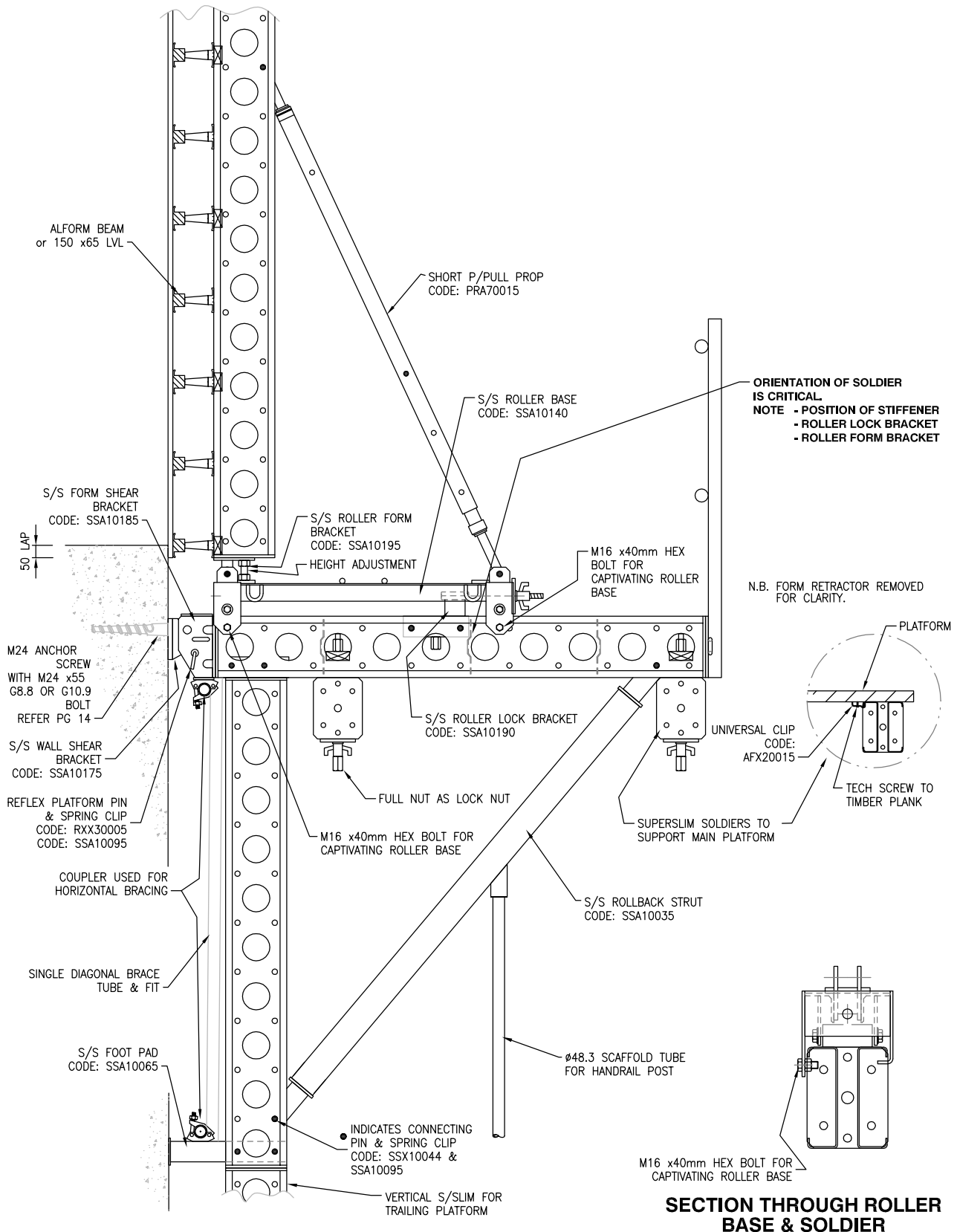


Anchor Screw setting location in shutters shall be within 5mm of true location.

Note: If Anchor Screws are used these shall only be M24 Anchor Screws.

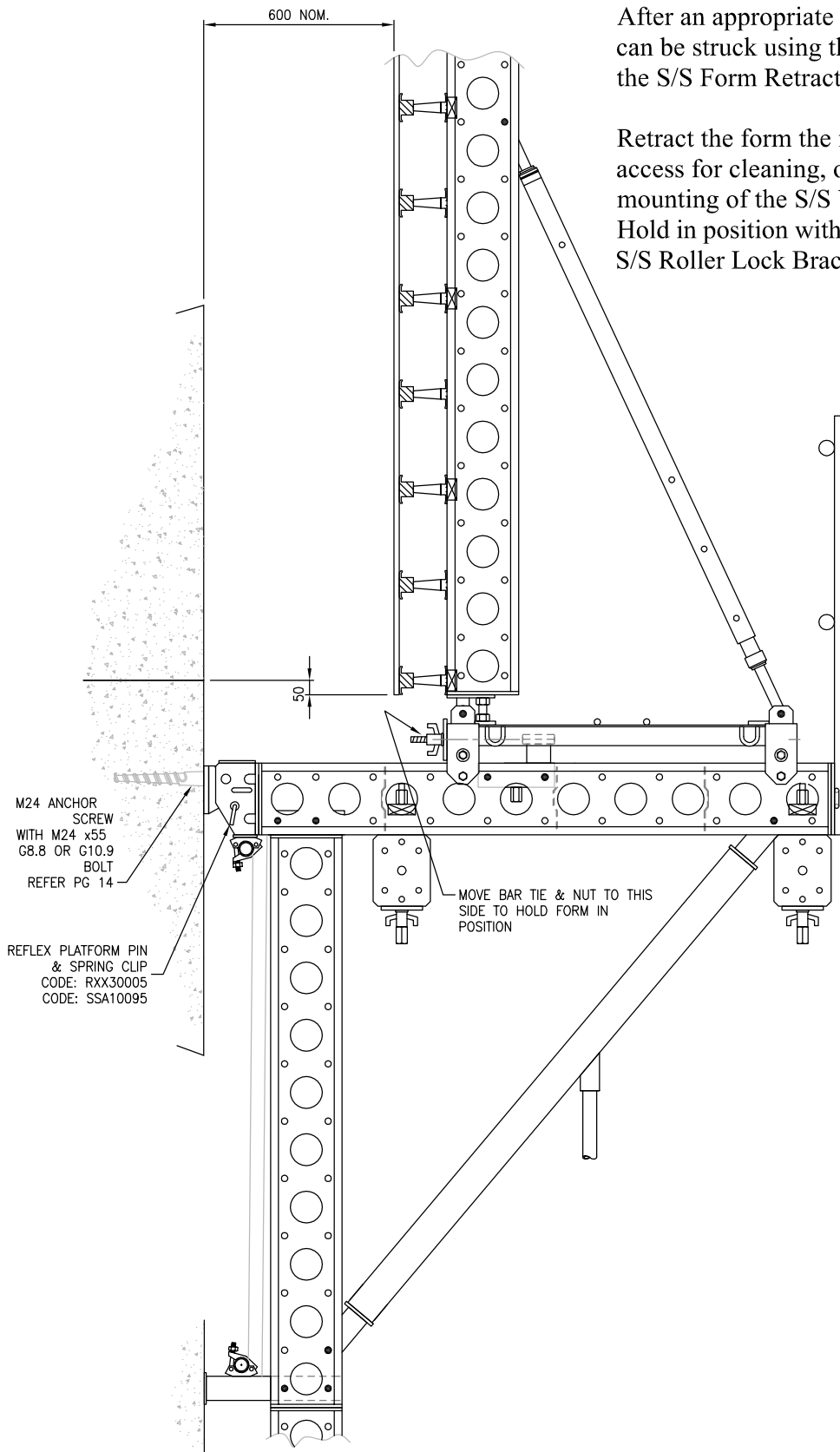
TECHNICAL DATA

ROLLBACK SYSTEM IN SET POSITION (ALFORM OR 150mm LVL)



TECHNICAL DATA

ROLLBACK SYSTEM IN STRIPPED POSITION (ALFORM OR 150mm LVL)

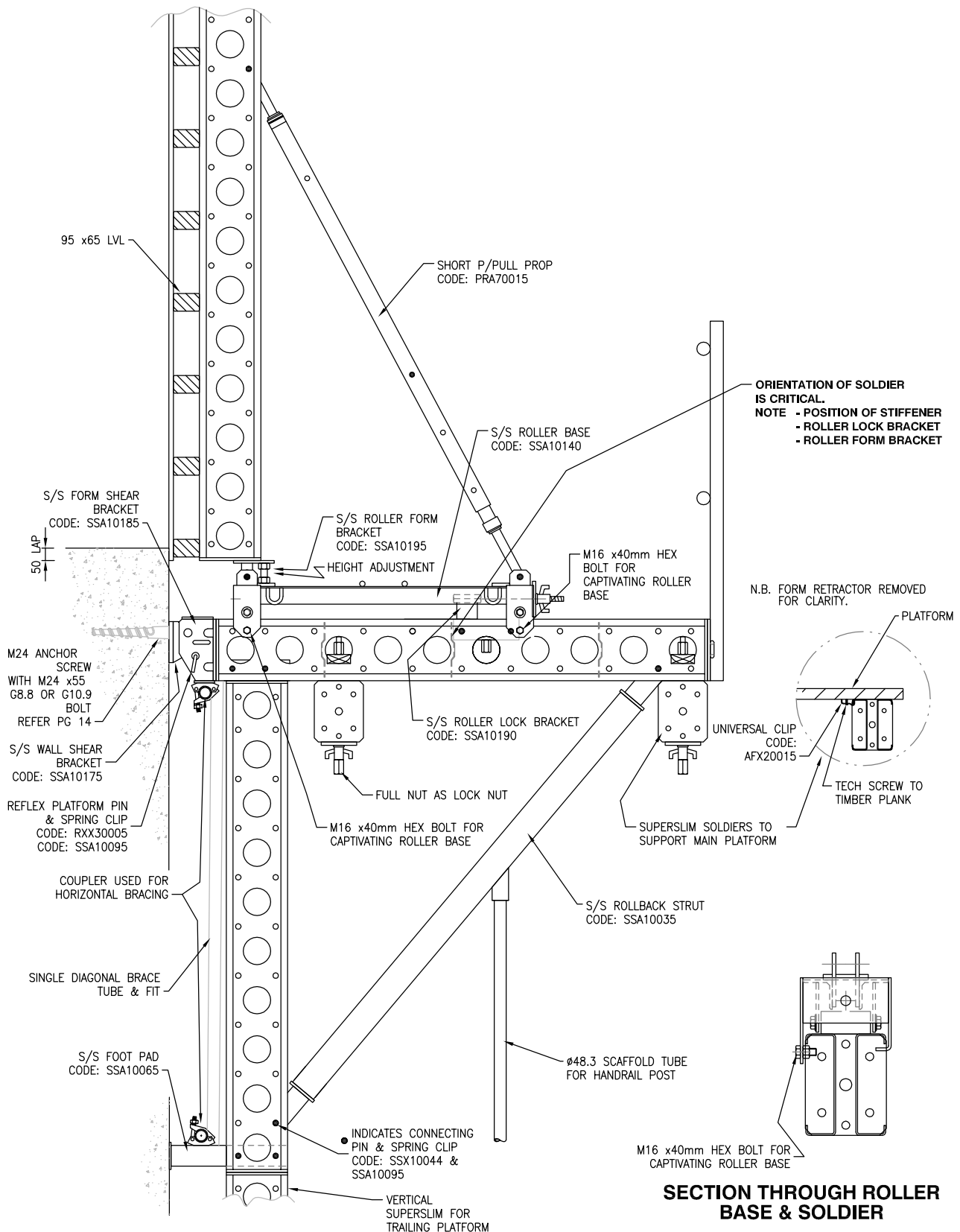


After an appropriate curing period the forms can be struck using the Push/Pull Props and the S/S Form Retractors (SSA10070).

Retract the form the full 600mm to allow access for cleaning, oiling of the forms and mounting of the S/S Wall Shear Brackets. Hold in position with Bar tie and the S/S Roller Lock Bracket as shown.

TECHNICAL DATA

ROLLBACK SYSTEM IN SET POSITION (95mm LVL)



TECHNICAL DATA

This information conforms to AS3610

RMD reserves the right to change this information.

DATE: 18 Nov 2013

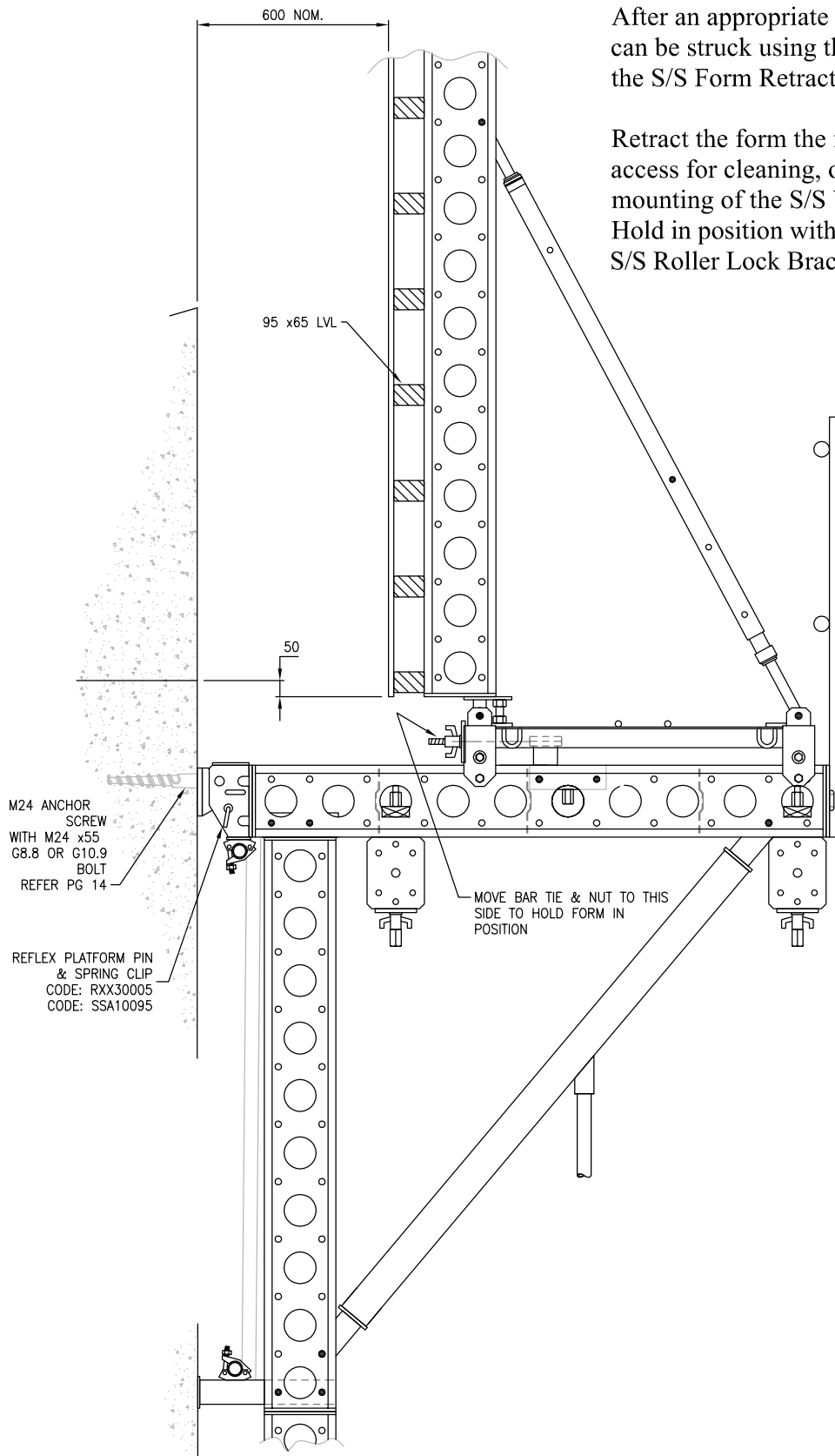
ISSUE No: 6

PREPARED BY: D.H.

APPROVED:

Handwritten signature

ROLLBACK SYSTEM IN STRIPPED POSITION (95mm LVL)



After an appropriate curing period the forms can be struck using the Push/Pull Props and the S/S Form Retractors (SSA10070).

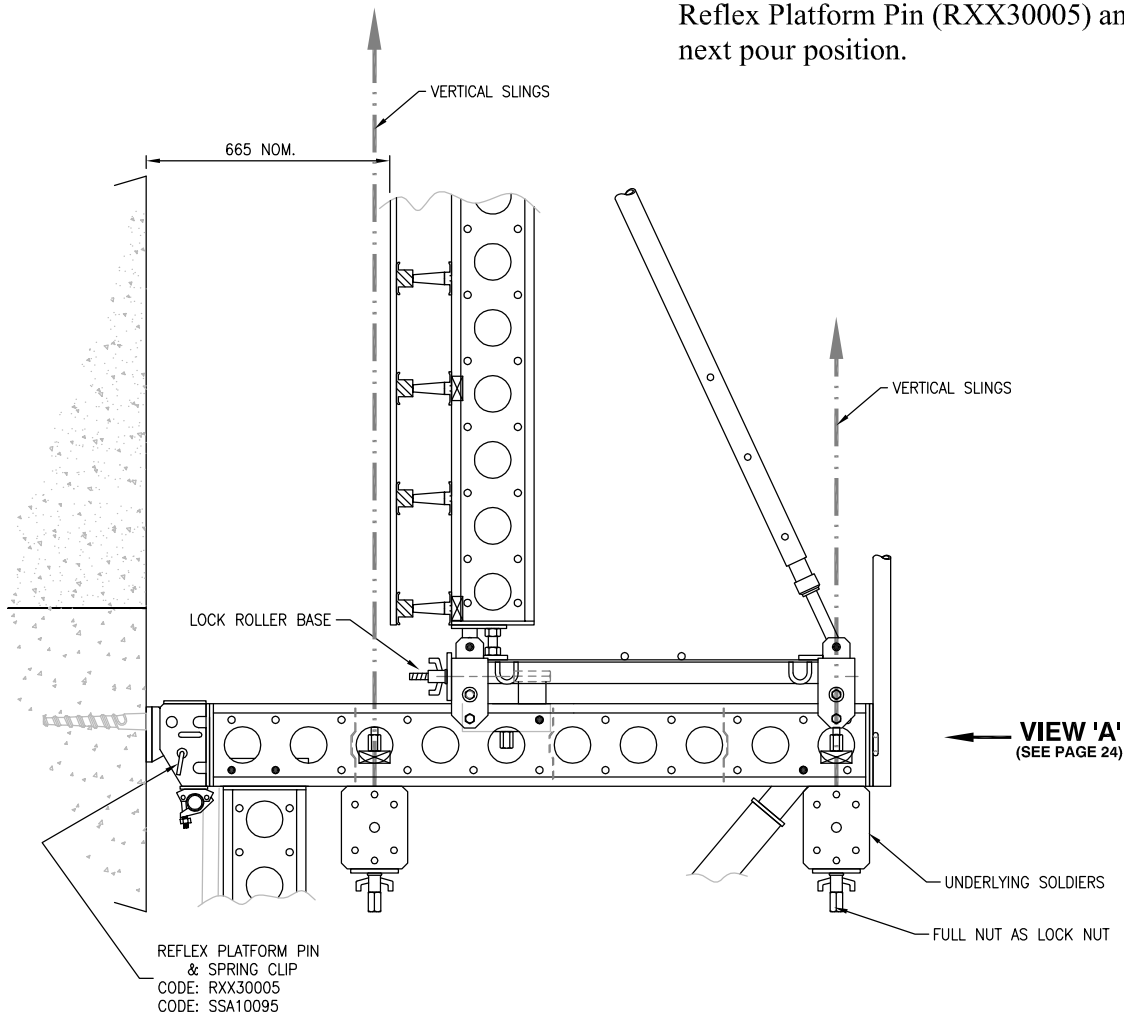
Retract the form the full 600mm to allow access for cleaning, oiling of the forms and mounting of the S/S Wall Shear Brackets. Hold in position with Bar tie and the S/S Roller Lock Bracket as shown.

TECHNICAL DATA

ROLLBACK SYSTEM IN LIFT POSITION (ALFORM OR 150mm LVL)

With the forms rolled rearwards and held in position with Bar tie and the S/S Roller Lock Bracket as shown.

When ready to lift the forms, remove the Reflex Platform Pin (RXX30005) and lift to next pour position.

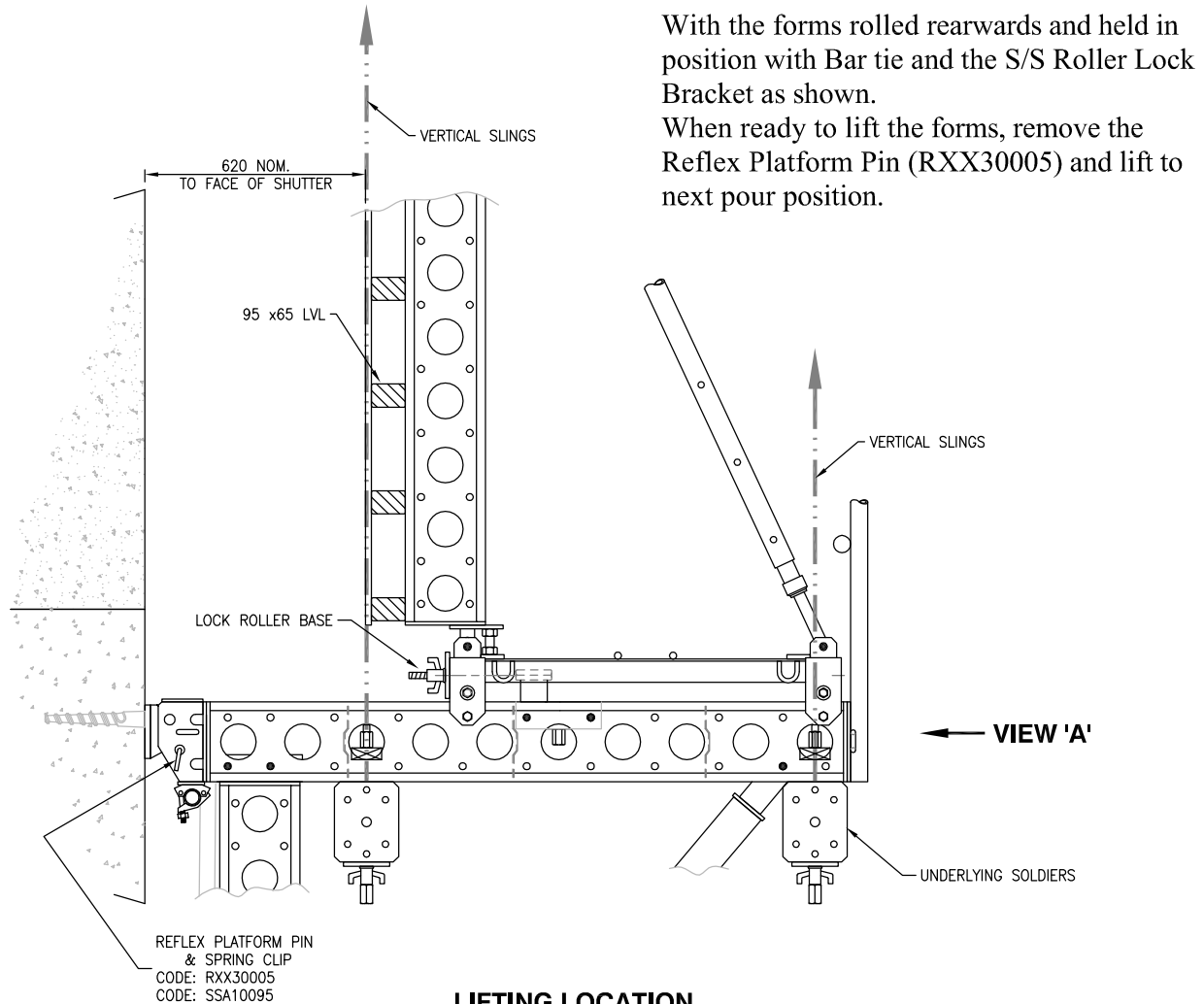


LIFTING LOCATION

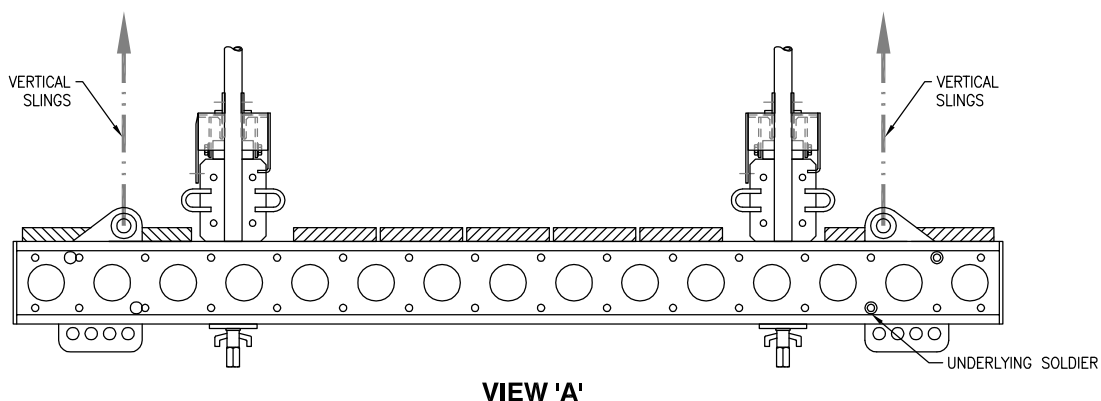
The forms shall only be lifted from the underlying Superslim Soldier with vertical slings to lifting beams.

TECHNICAL DATA

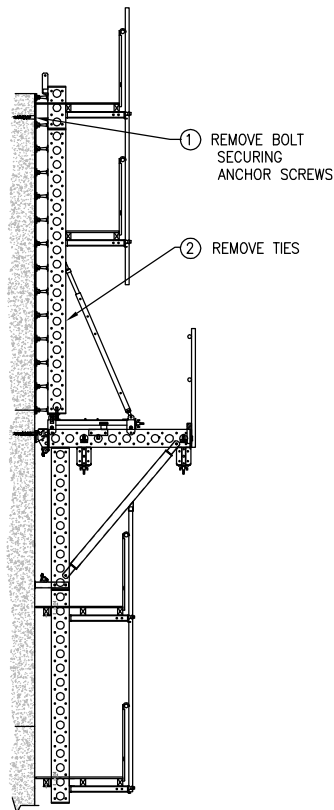
ROLLBACK SYSTEM IN LIFT POSITION (95mm LVL)



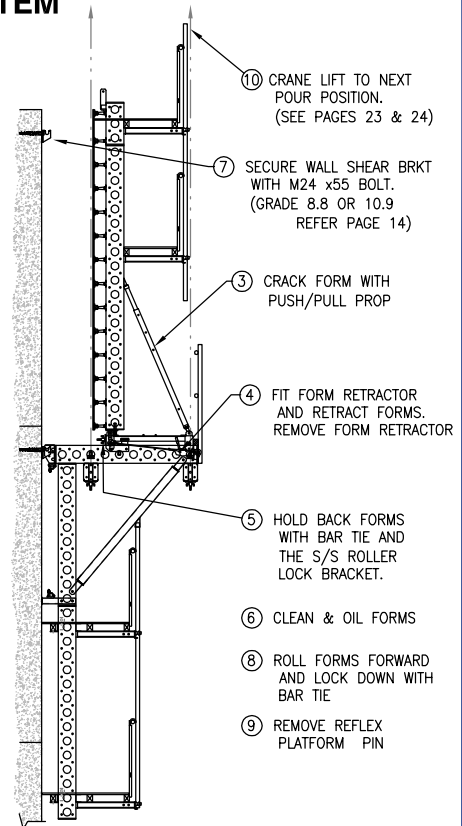
The forms shall only be lifted from the underlying Superslim Soldier with vertical slings to lifting beams.



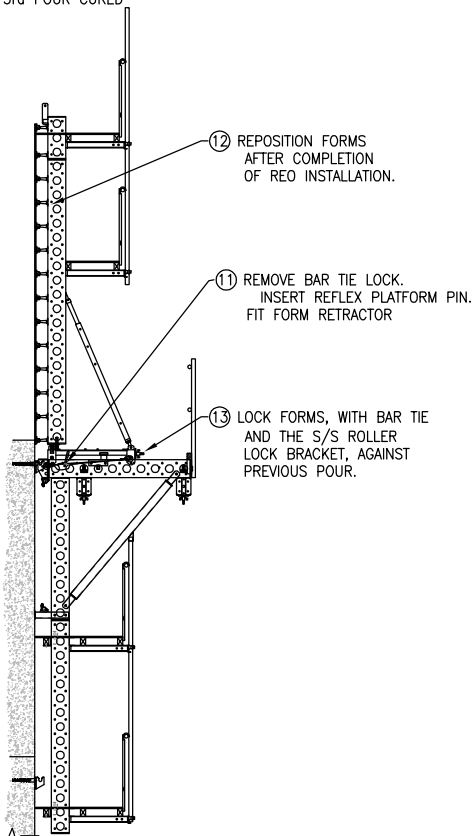
SEQUENCE OF OPERATION OF THE ROLLBACK SYSTEM



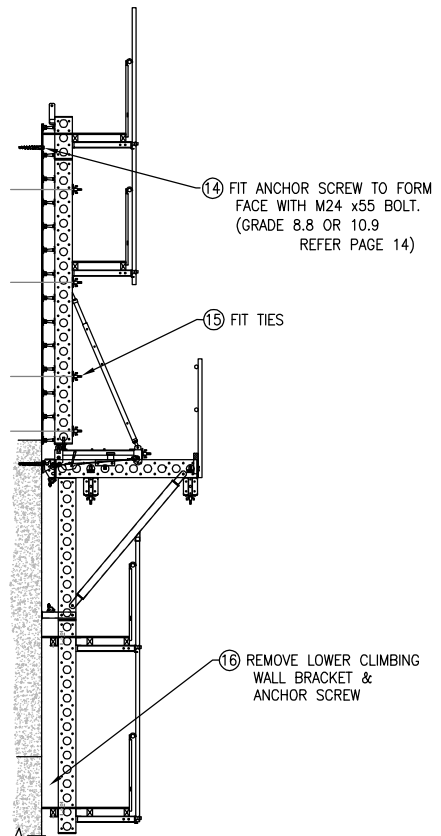
STAGE 1
3rd POUR CURED



STAGE 2



STAGE 3



STAGE 4

4th POUR READY TO BE POURED

TECHNICAL DATA

This information conforms to AS3610

RMD reserves the right to change this information.

DATE: 18 Nov 2013

ISSUE No: 6

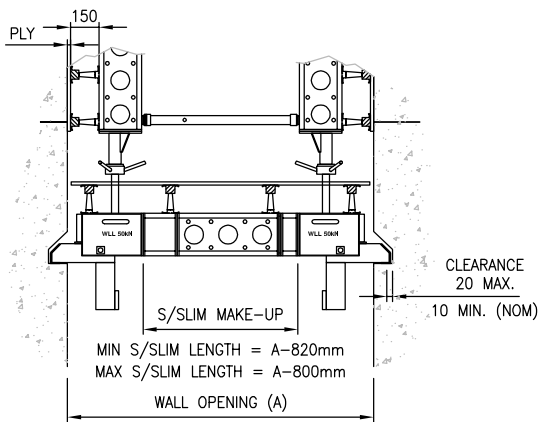
PREPARED BY:

D.H.

APPROVED:

Handwritten signature

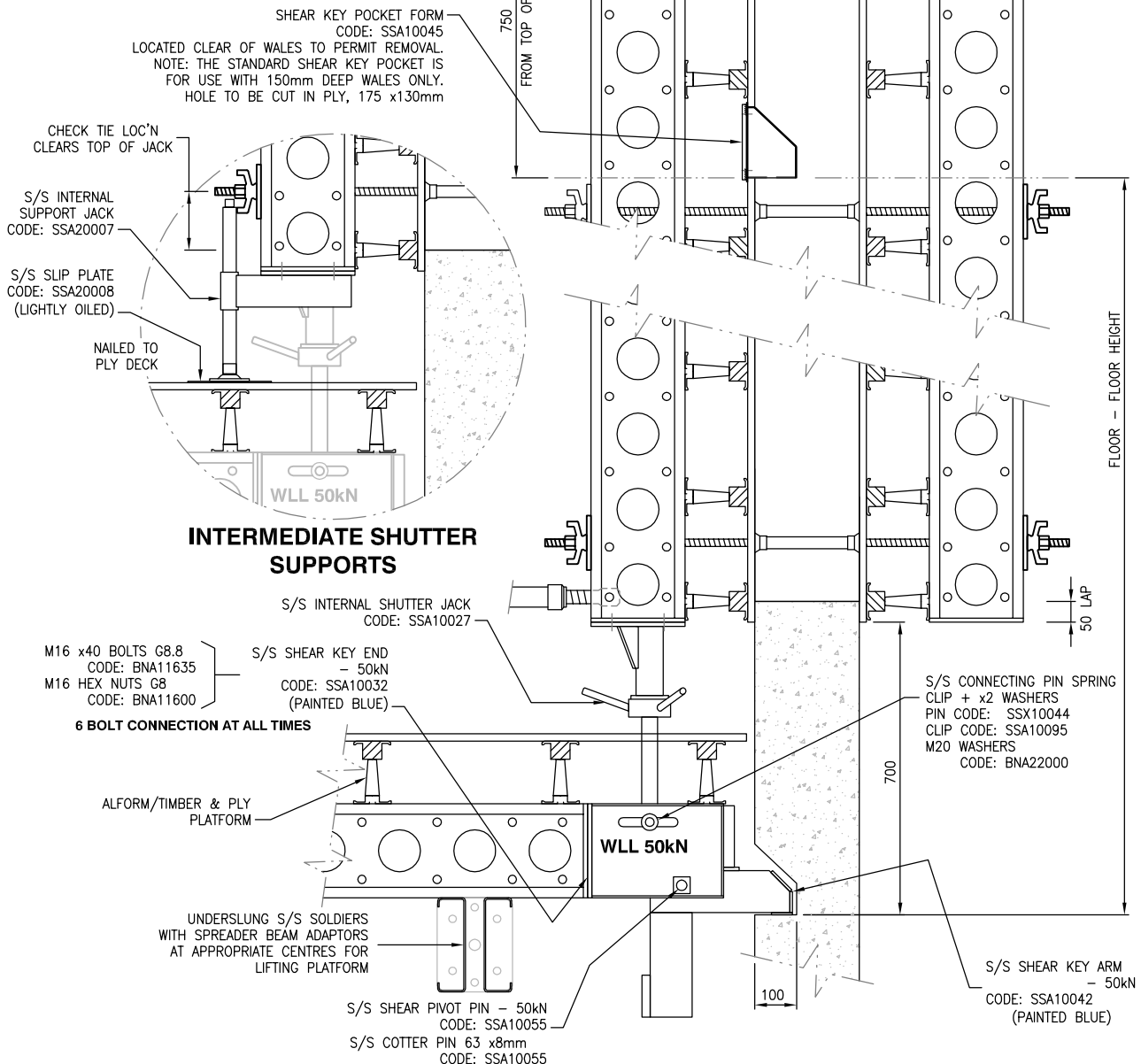
DETAILS OF 50 kN INTERNAL PLATFORM SUPPORT SYSTEM



The Internal Platform Support comprises shutters which are mounted on a Superslim Soldier base supported by the S/S Shear Key End - 50kN and the S/S Shear Key Arm - 50kN. The full assembly is crane lifted until S/S Shear Key Arm locates into the newly cast pocket.

NOTE
EXTERNAL SHUTTER
SUPPORT SYSTEM
NOT SHOWN

STANDARD LAYOUT OF INTERNAL CLIMBING FORMS



This information conforms to AS3610

RMD reserves the right to change this information.

DATE: 18 Nov 2013

ISSUE No: 6

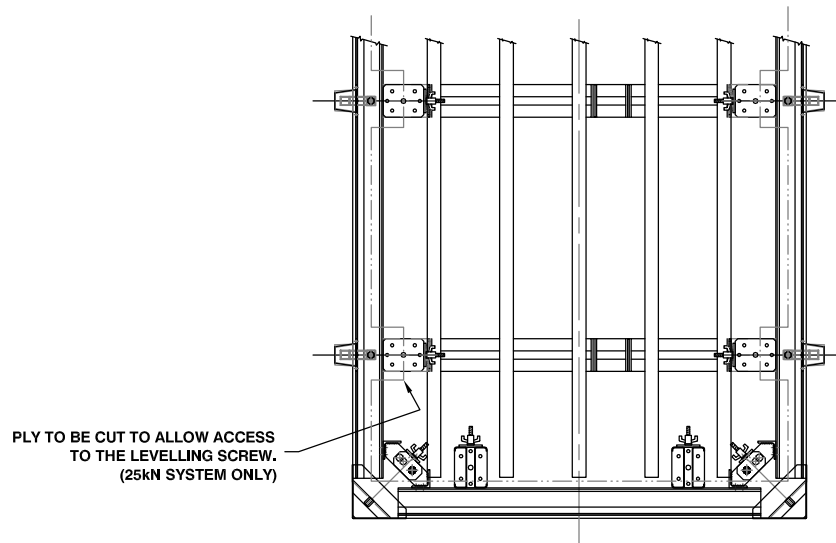
PREPARED BY: D.H.

APPROVED:

[Signature]

TECHNICAL DATA

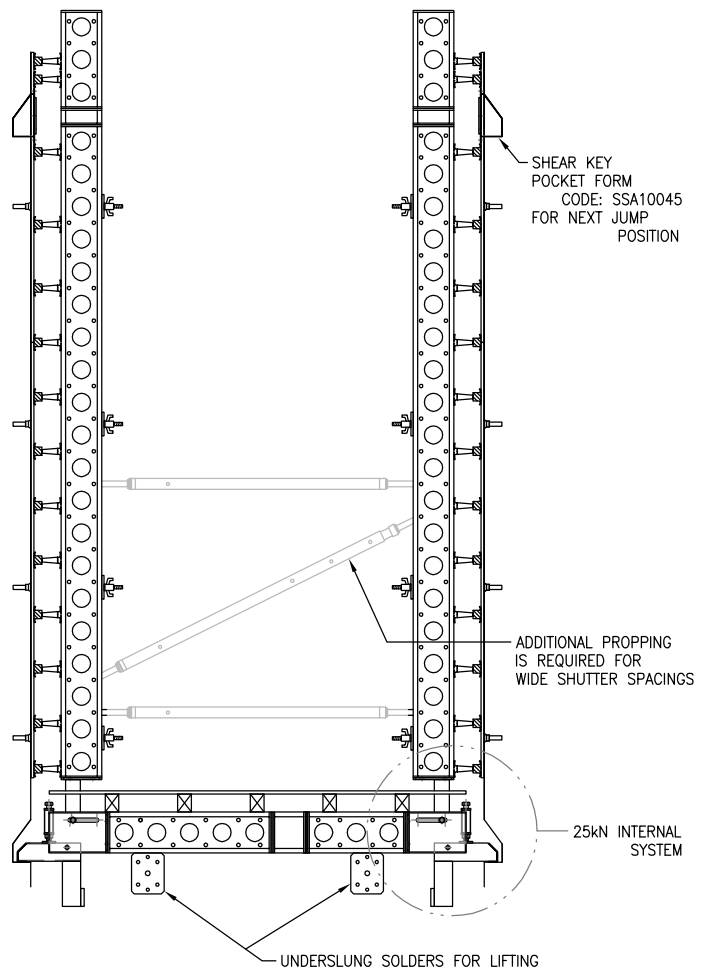
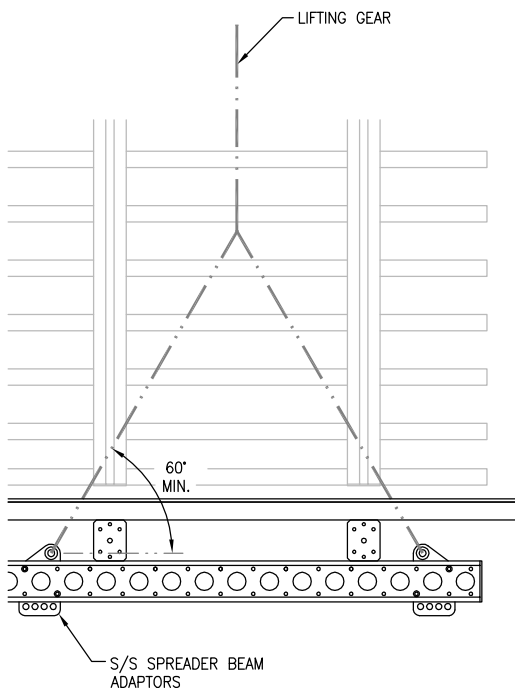
DETAILS OF INTERNAL PLATFORM SUPPORT



PLAN VIEW

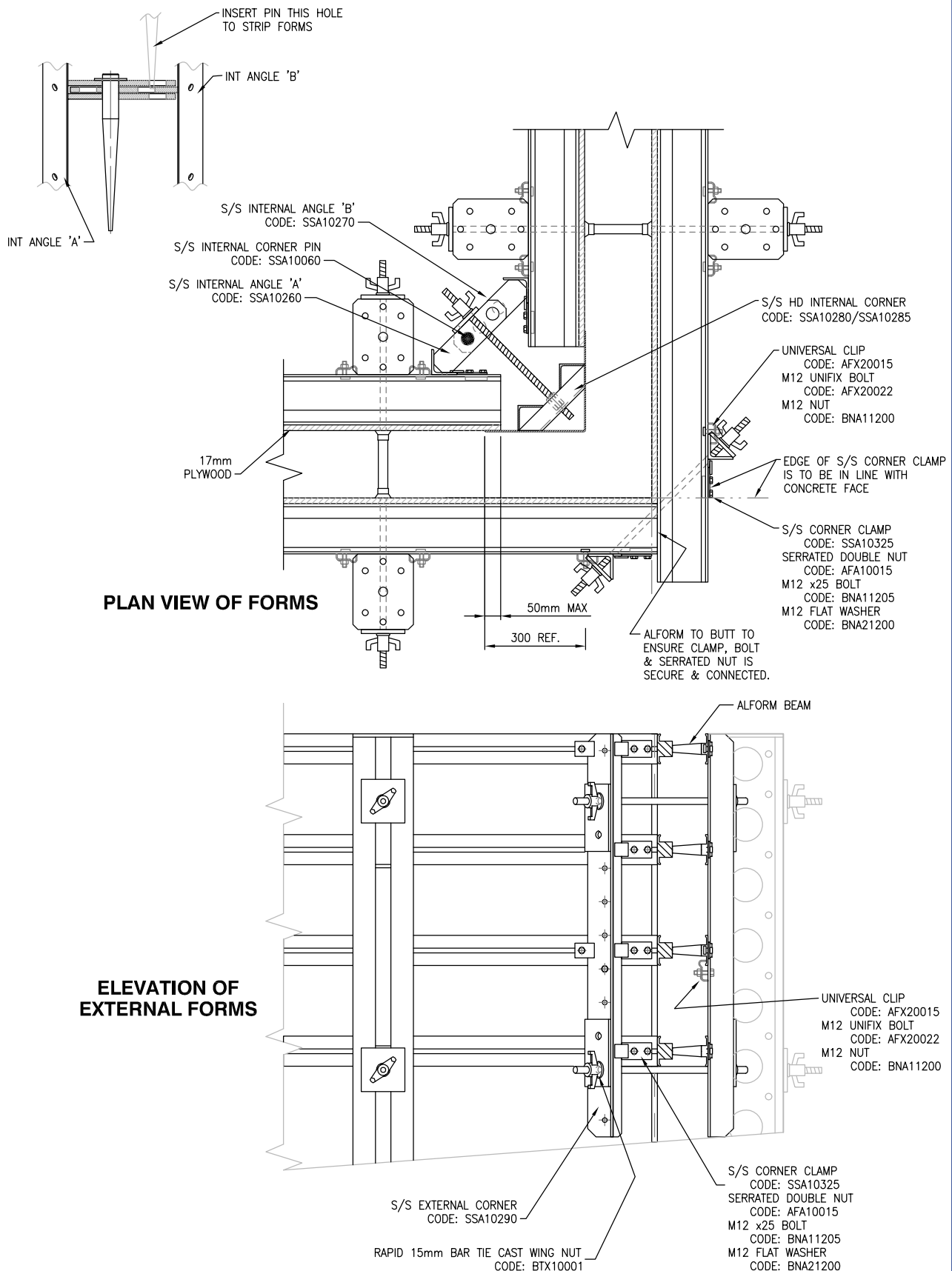
UNDERSLUNG SOLDERS FOR LIFTING ARE NOT SHOWN

The lifting slings shall only be attached to either Superslim Lifting Plates or Spreader Beam Adaptors.



TYPICAL SECTION

DETAILS OF CORNER SYSTEMS - READY FOR POURING CONCRETE



TECHNICAL DATA

This information conforms to AS3610

RMD reserves the right to change this information.

DATE: 18 Nov 2013

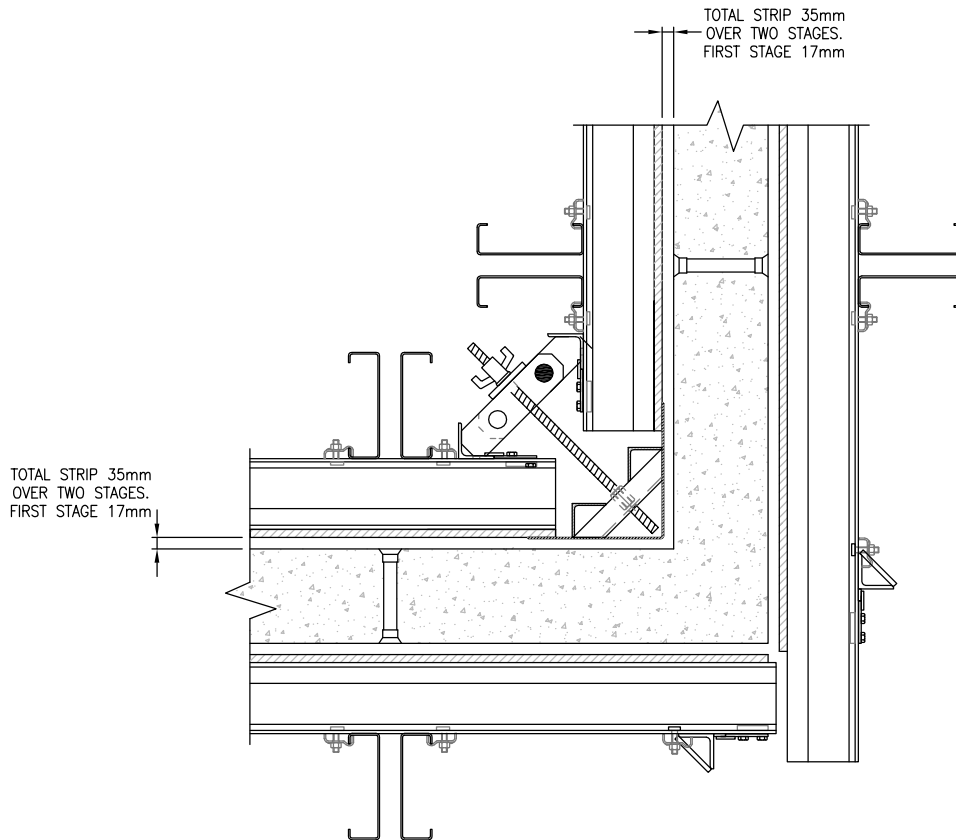
ISSUE No: 6

PREPARED BY: D.H.

APPROVED:

[Signature]

DETAILS OF CORNER SYSTEMS - STRIPPED FORMS



TECHNICAL DATA